

This is a sample book.

www.SubhaVaastu.com

Street Focus Vaastu

e-book

: Author :

Suresh

Cell :- 00 91 98481 14778.

We tried our level best to find out mistakes in the e-book, there is a possibility of human errors, so please don't follow any recommendations or suggestions in this e-book without having proper guidance from us. We are not at all concern with your benefits or difficulties by following the suggestions in this e-book, please be remind the same.



Mr. Hari
Dubai.



There is no words to say thanks for his kind heartfelt support to our web site. We are very proud to dedicate this book to him.

Thanks a lot to Mr. Hari (Dubai).

Our special thanks to Sri K.Ramakrishana, Rtd., General Manager, Paschim Vihar, New Delhi.

To our beloved DTP operator Chi. Shaiksha, Kurnool (A.P.)

Team

www.SubhaVaastu.com

Cell : 00 91 98481 14778.

STREET FOCUS

The Origin of Vastu shastra is difficult to be traced as it is lost in antiquity. The ancient Indian sages have divided the cosmic calendar into into 4 broad stages, namely Kritha, Thretha, Dwapara, and Kaliyug. Man came on the scene perhaps in Threthayug and the origin of Vastu shastra is traced to this period only. During this period of development communication being what they were resulted this knowledge getting restricted to ruling and elite class of this society only. Thus depriving the large society benefits of this science. In course of time, science, things have changed, democracy has replaced the autocratic Government and more than any thing else individual freedom has become the supreme possession of man. Further the present information explosion has had the beneficial efforts of making the science available to one and all.

Vastu Shastra appears to be an obstruct science until we know actually. For practical application confirm the knowledge. The study of Vastu shastra starts with the knowledge of the basic five elements of creation, **Space, Sun, Air, Water and Earth.**

If a plot or the construction there on is in conformity with the aspects of this five elements, that is Vastu shastra science, the residents of the plot or the construction have an opportunity to live in conformity of the basic five elements and thus prosper. If, however, such is not the case, progress in life of the residents is rather difficult.

In fact it is rather difficult to precisely define the term Vastu shastra. In my opinion Vastu shastra means a construction method compatible with progress and happy prosecution applied or a construction that bestows peace of mind (to the residents).

Material possession alone or not a substitute to the mental happiness for non is greater than one enjoying bliss. We are acutely aware the best of earthly possession alone cannot give us bliss for at best they can give you a momentary pleasure. How ever when the life goes on in a positive manner it will lead to a blissful state of mind. Basically Vastu shastra ensues the prospects of prosecuting a happy and prosperous way of life as an example if a person desires to become an influential member of the society (may be a doctor, advocate, engineer or influential political leader or the like) and makes appropriate efforts in chosen field if his residence is Vastu shastra complaint, there are far greater chances of success.

If a business man invests a large sum in his enterprise, and his residence is Vastu shastra complaint, it helps him in preventing losses and promoting progress in his venture.

A Vastu complaint home bestows on his residence and exalted life accompanied by name and fame in society and hence to mental happiness. He does not mean, however, that the residence will automatically become leaders of society etc without their own efforts in the chosen direction.

This is an obstruct science drawn from the science of Meta physics. I would urge people to recall what Einstein has said about Meta physics. Quote: "what is Meta physics today is physics tomorrow, in fact there is very thin difference between these two". Some people how ever deny the science of Vastu shastra. For them I have a simple solution when you are building a house kindly do build the same as per Vastu shastra science, this does not cost extra and there is no loss to you either. On the other hand it would (nay-may) have beneficial efforts.

THIS IS A SAMPLE BOOK.

India, in deed the whole world is home to several prejudices and blind believes which we follow knowingly or unknowingly, for example: abundant journey if a cat crosses your way. Abundant any situation where you are 13th in serial order. Or do not stop any work when some on sneezes etc and the worst of all is considering as a bad omen if a widow is comes opposite you.

Else where in the world cat is a pet animal with which one place in the home. Some even think that if one faces a cat while on an enterprise it is good omen in deed.

Actually such prejudices (or blind faiths) what ever they be or region specific, or society specific and not necessarily universal. I would even go to the extent of saying that the blind faith or prejudices or rather foolishness. Any faith or otherwise not founded on scientific principles is prejudice only. Strong instances or wrongly publicized leading to preducis practices. Absence of education and literacy is a fertile ground for the spread of this disease. How ever some practices such as getting up from sleep from the right side is insisted upon based on more scientific principles than blind faith, even though we blindly follow them. If in deed when the same is scientific is best to adopt them even when we don't know the complete science behind it. Rising from the left side puts extra pressure on the heart which is not a healthy practice. When ignorance is rampant, such methods as to compel them to follow or employed and this example is one such. In the bygone days when resources were meager and facilities were inadequate, such scientific practices which are easy to adopt were in vogue and there became blind faiths as they were not explained in adequate terms. In the yester years such methods were perhaps possible, and not in a now a days. Example, why people urge you to stop work when you sneeze ? , in the bygone days there were not adequate medical facilities, when some one

that, and charge a sum of two thousand rupees as initial advance and later twenty thousand rupees as fees and also feed seven scholars for seven days, further he was continuously extracting money from him, there after too and promise that within 21 days every thing would be resolved, poor Naik was an easy victim, even after several months, the problems remained as they were. Naik felt he was cheated and wanted to confront the imposter. It was too late, he could not locate him. Many of the people do not like to pay the vastu scholar his legitimate fees and fall easy victims in the end (to such fake scholars and in fact lose far more in the bargain) , all this happens because of improper vastu of his own house. A genuine vastu scholar does not recommend Talismans, pooja, and the like, he looks at the house and physical environs and makes his recommendations.

No doubt fate is fatal, yet one has to face the same and try to overcome, the one boon God gave us in this regard is Vastu. Earlier Saints have written several treatises on this subject, also present scholars have contributed to this science tremendously by conducting original researches in various aspects of vastu, Their struggle in this regard has indeed been phenomenal, once street thrust brings fortune to one family and the same may not be so to another. Studying all these varying aspects and coming to logical conclusions has indeed been a great feat, accomplished by the present day scholars.

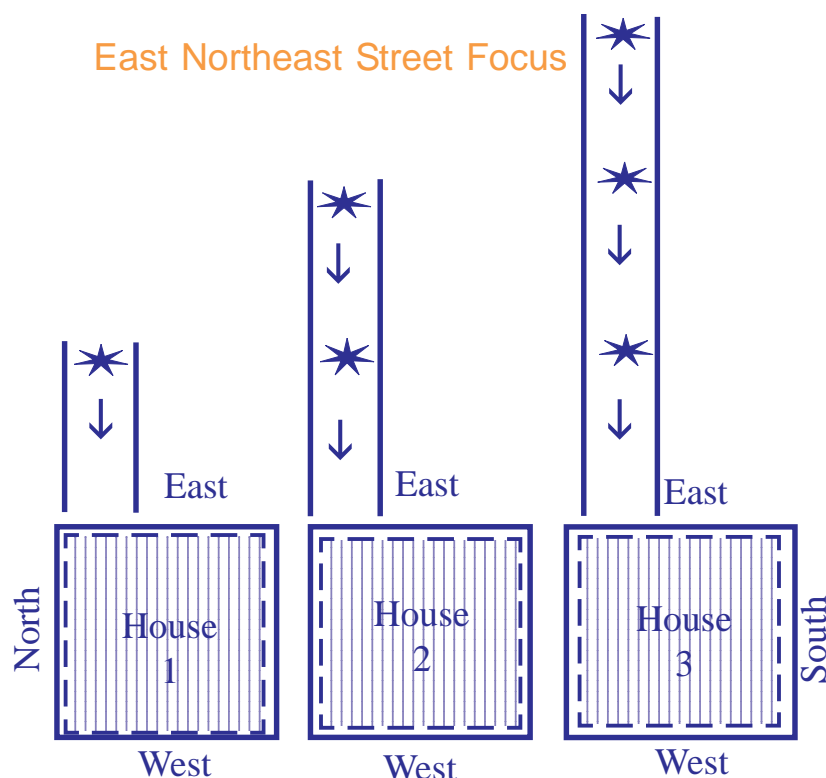
We should always remember one cardinal principle, whatever be the surroundings our home should at least be vastu compliant, for we may not be able to modify or correct external surroundings by applying remedial measures in our own house, it is possible to mitigate some of the influences of external factors.

Such street thrusts are a part of neighbourhood vastu.

Let us examine how such street thrusts affect the residents, where does the street gain strength to either be benevolent or malevolent ? This can only be assessed by seeing the street alone.

Visit www.SubhaVaastu.com for more information on house, factory, shops and institutions vastu. The Entire website browsing is free. There is no condition, registration not required for surfing. Feel it as your own website. More than 2000 reviews published. Our main concept to create this website is the science of vastu shastra has to reach to all the citizens belong to all countries. Every body has to be grow rich and enjoy the peace and security. We spent more than 1,20,000 USD to build this website. Still there is lots of work pending to complete this website. If you feel that this website is good, then inform to your friends, may be they are in need of vastu shastra. Thanks a lot

STREET FOCUS EAST NORTHEAST



Lin figure -1 three houses having ENE street focus are shown, all the houses are of the same type as also the street focus.

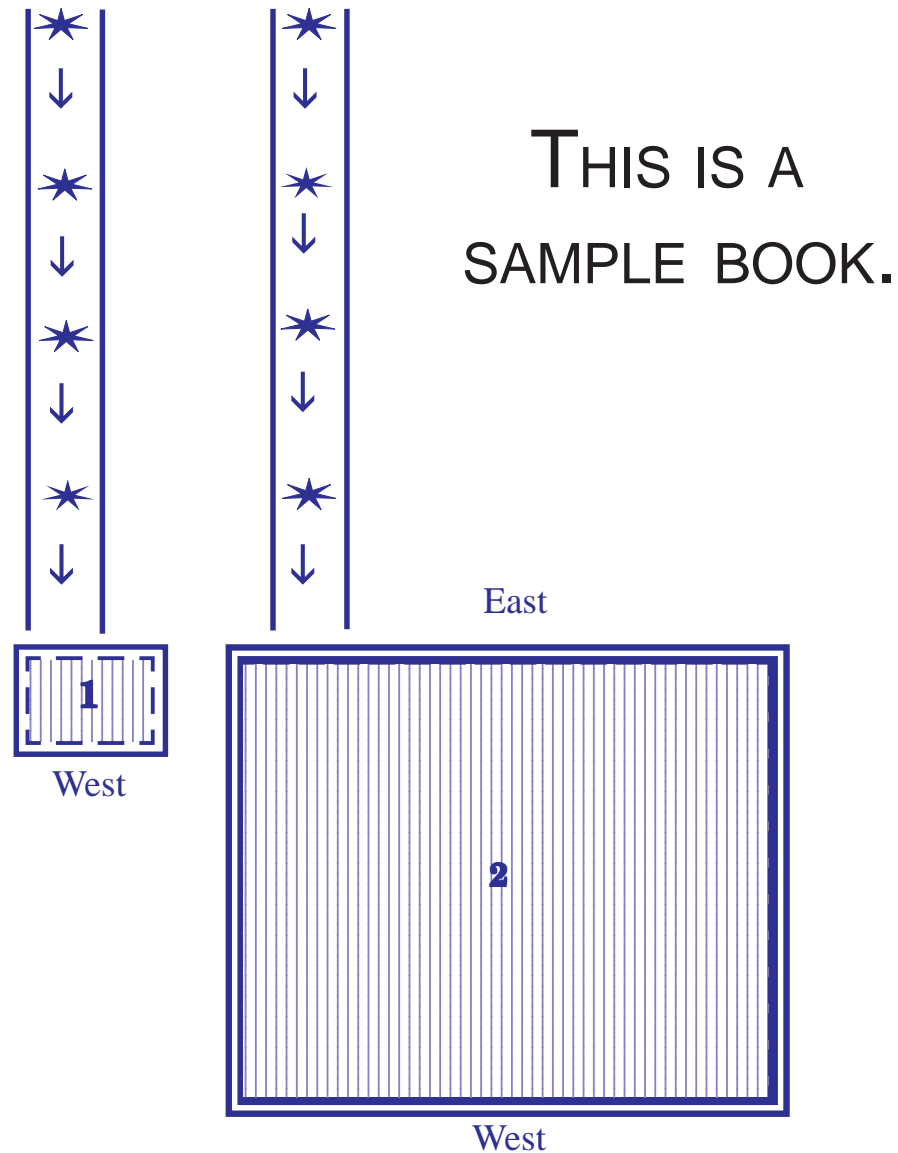
House no:1 .. has ENE street focus where the thrusting street is sharp in length. The second house has ENE street thrust which a longer street and third house similar thrust which much longer street.

The strength of street thrust is directly proportional to the length of the road causing such thrust.

Let us study now these three houses, study the asterisk and arrow marks the asterisk is quantifying the strength of the street thrust, the first arrow has one, the second two and third three asterisks. One star and arrow carry huge power, two stars and arrows still longer and three stars and three arrows still larger strength.

For home -1 the ENE street focus brings immense prosperity and we presume for the third house, the prosperity quotient would be tripled . However this is possible only when the third house is comparatively much larger than the first house. Only then the huge power could be observed by the house and bestow its benefits in like proportion. Only for your conceptual understanding this is shown pictorially.

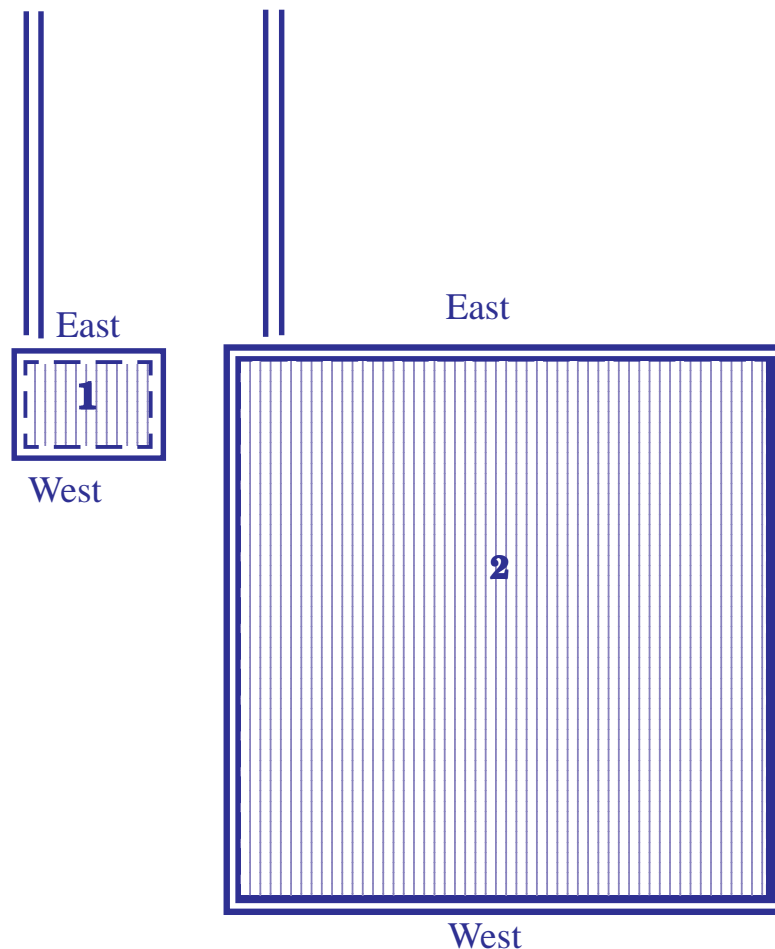
See the following figures, this will further help understanding of this phenomena.



Study the houses one and two, first one is small in size, the second house is much bigger. However the street focus for both the houses is similar. In this case the second house is able to observe the power of the street thrust better than the first. This does not however mean that first house gets lesser strength.

Shortly we are releasing a world famous vaastu english e-book "SubhaVaastu". Thank you very much for your kind support to www.SubhaVaastu.com. A free concept vaastu website. Visit <http://www.SubhaVaastu.com> for more information on latest announcements. We are planning to release some more e-books i.e., Surroundings vaastu, Bed room vaastu, Vaastu tips, Complete vaastu (vaastu sarvaswam), etc., please be in touch with us.

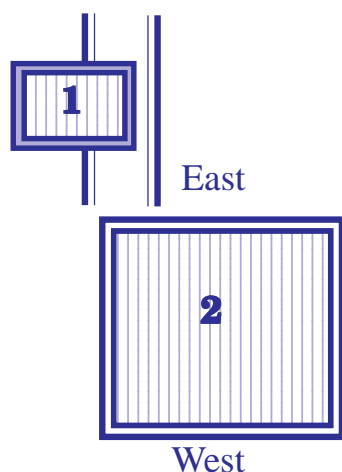
East Northeast Street Focus



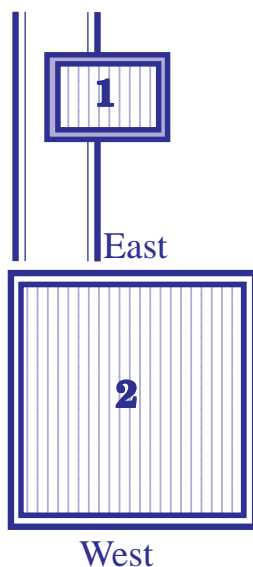
See the two houses in figure three having street focus, house number one is small, house number two is very large, however the ENE street focus is same for either house. In this case house number one is able to absorb fully the effects of street focus. In case of house number two even after absorbing the effect fully it is insufficient. In such situations the residents of house number -1 would be benefited much earlier, where as in case of house number two may be delayed.

It may also not be totally correct state that the benefits of the street focus bestow similar results to all houses. Streets are never uniform (in size and length and surroundings), they may have peculiar bends and may have several combination effects. Only a competent vastu scholar may be able to detect these and comment on them. Vastu shastra is like a huge ocean and it cannot be quantified. Its depth is unpredictable. Sad in our society, there are people who precisely do the same and deceive the general public. However there are people who seem to feel it birth right to get cheated and some do get cheated due to their thinking and that they should not be extravagant (?) In their payments to competent vastu consultant and thus waste large sums of their hard earned money and time. However, there all a few how do posses right temperament and consult accomplished vastu consultant and profit there by.

When we studied the following figures we may wonder if ever there are such combinations of the street thrust.

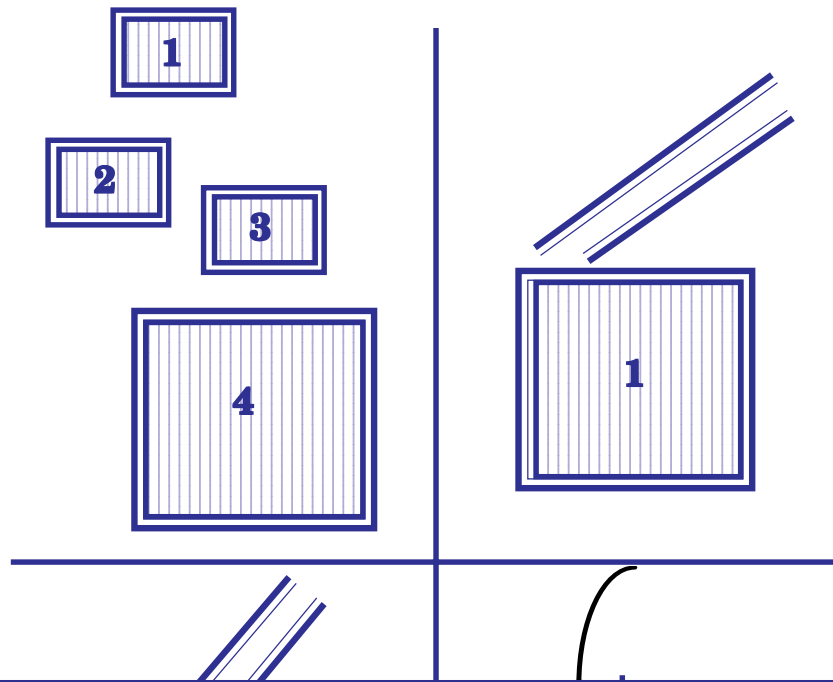


In figure though there is benevolent ENE street focus on house number 2 it does not bode well. Consequently the beneficial effects would be delayed.



In figure though the situation is similar to figure 4 there are no ill effects of corner thrust of home number one.

Visit www.SubhaVaastu.com for more information on house, factory, shops and institutions vastu. The Entire website browsing is free. There is no condition, registration not required for surfing. Fell it as your own website. More than 2000 reviews published. Our main concept to create this website is the science of vastu shastra has to reach to all the citizens belong to all countries. Every body has to be grow rich and enjoy the peace and security. We spent more than 1,20,000 USD to build this website. Still there is lots of work pending to complete this website. If you feel that this website is good, then inform to your friends, may be they are in need of vastu shastra. Thanks a lot

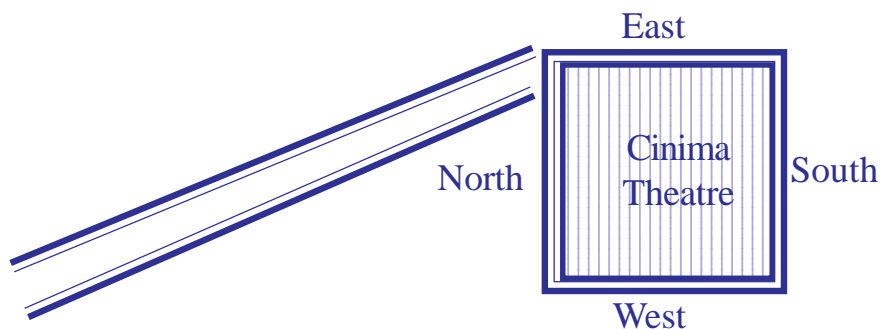


Do you want to read complete book then buy it .. write an email to : subhavaastu@gmail.com .. we will send you the payment link.

Cost of this ebook is : \$ 99 USD.

Present offer price is only \$ 49 USD.

I have studied two cinema theatres in a town, both in the same premises ground and first floor. They were facing two street thrusts, let us study the malevolent street thrusts only.



People presume the above street thrust to be NNE. Huge sums were

thus invested and the two theaters constructed on a grand scale, we may assume for the sake of discussion the theaters as NE block, to this block there are streets on Eastern and Northern side. However these streets did not extend towards north and east. People generally assume that the block is favoured by northeast street focus and came to grief. These theaters however ran successfully for two to three years only and closed now. Further these theaters are not even mentioned about. Such is the result of wrong decisions. Nearly two crores of rupees investment (around 1995) has bitten the dust.

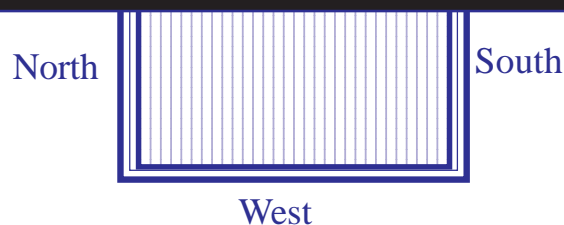
The strange part of the whole story is the site was wetted by a vastu consultant (?), you may conclude the rest of the matter. Because of his ignorance several people lost their investment and several others employment too.

A competent vastu scholar seldom makes such blunders no one desires to earn a bad name. Even a small mistake may result in huge consequences.

Do you want to read complete book
then buy it .. write an email to :
subhavaastu@gmail.com .. we will
send you the payment link.

Cost of this ebook is : \$ 99 USD.

Present offer price is only \$ 49 USD.



The street are starts from ENE and strikes the house on ESE, this house will have the effects of ESE street thrust. But in that severity do not in the same intensity. Putting it in another way the effects should be similar in intensity to that of ESE thrust on fully vastu compliant house. For a fully vastu compliant house greatly moderates the malevolent effects of ESE street thrust. Just as the residual smell retained in a container even after the

contents are emptied. If some remedial steps are taken even this can be overcome. However a comprehensive evaluation is possible only after actual fields study.

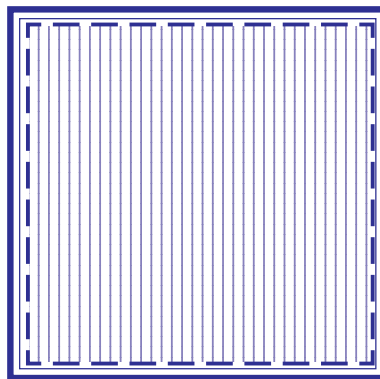
The benevolent results of Northeast construction ?

Things such as extension on Northeast side, low level on NE side, though are window on the NE such and similar things are beneficial. We first examine this:

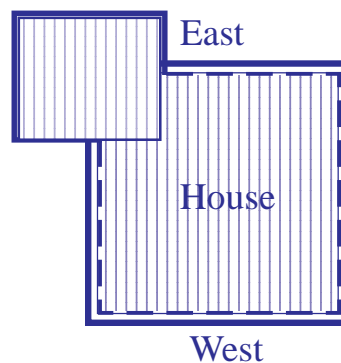
If NE of our extended it has beneficial effects, examine figure -10., let us for the present leave aside the quantum of extension and examine the types of extension so as to understand the subject in a comprehensive manner.

Normal Home

East



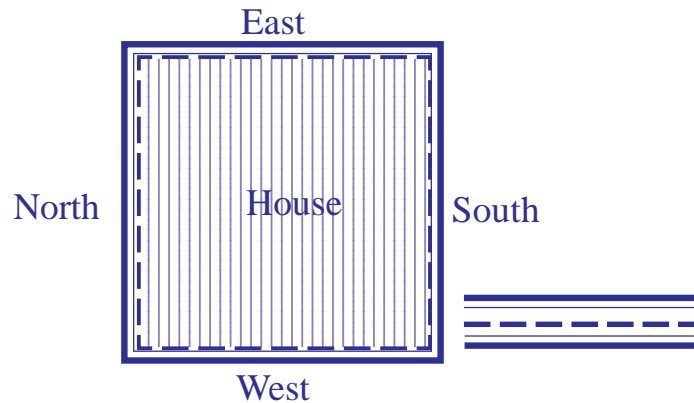
House only extended towards northeast



Along with vastu shastra we have created thousands of God's desktop and cellphone wallpapers, now almost these wallpapers reached to 20000. Browse for your interested God wallpaper and download, please note that entire downloads are also free. No condition and no registration required. Thanks a lot.

SOUTHWEST SOUTH STREET FOCUS

If a street strikes on the SSW side of the house this would be called SSW street thrust see figure



This is one of the malignant street thrust. I have seen instances where residents have greatly suffered consequences of such a street thrust. There are two types of these street thrust

1. Natural street thrust that is inherent
2. Manufacture street thrust due to wrong acts

We are familiar with street thrust occurring naturally however in some circumstances when we encroach or extend the house to the west side we would face SSW street thrust and perhaps NNW street thrust too.

If there is a SSW street thrust to southwest block or southwest house do consult an expert in vastu for proper analysis and remedial measures to be undertaken.

The malevolent effects of SSW street thrust are

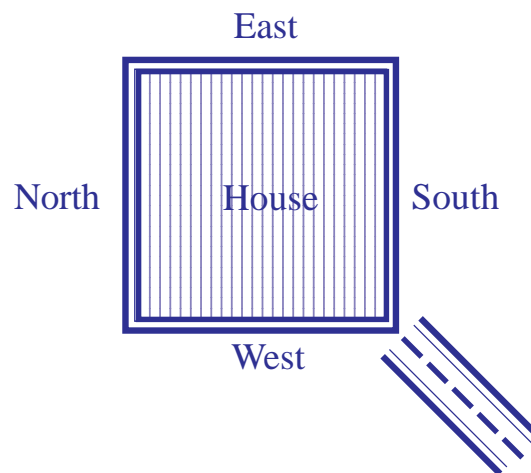
1. Insecurity feeling
2. Ill health, incurable ailments, running after several doctors
3. Getting caught in problems and losing patience
4. Financial losses, ruining, even closure of one's own business
5. Evil effects on female folks, evil thoughts, ruining of families, and if there be SE defects in addition, behaving in such a manner as to lose one's name and fame, doing mistakes in business and being unable to overcome the same, ending in total disaster, debts, murders and suicides, ending up in jail etc.
6. Residents will always suffer in mental torture
7. A rudderless life and depending on others dole

8. Accidents, untimely deaths etc
9. If there be any malevolent street thrust on a house which cannot be rectified or modified its best to avoid such premises with regard to SSW, SW and WSW street thrust I strongly urge people not to procrastinate and take due remedial precautions
10. Even when the enterprise is huge if due precautions are not taken with this street thrust viz SSW, SW, WSW as time passes on they may have to face on bad days and may end up in closure of the business.

If there be only one situation it could well be addressed. However these street thrusts would compound malady which saps one's energy and thus causes ruination.

SOUTHWEST STREET FOCUS

If a street strikes on the SW side of the house it would be SW street thrust, see figure



Such street thrust have the malevolent effects of both SSW and WSW street thrust. It is similar to a man walking with a huge load on head and having shackles on the legs.

It is generally recommended that SW side of the house be such that as they be high construction or high level (such as mounts, hillocks etc) this street thrust would be exactly opposite to the same. It would rather be difficult to face the ill effects of such a street thrust. One may cross a lake or even an ocean but not overcome the consequences of SW street thrust

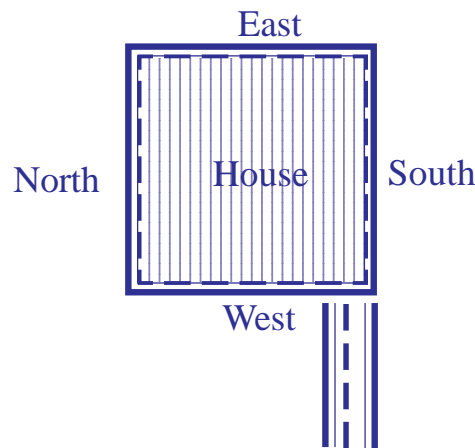
The evil effects of SW street thrust are

1. Feeling a insecurity

2. Always feeling of loosing some thing or other
3. Disturb mind, lack of peace, and insecure life
4. Untimely deaths and at times murders
5. Incurable deaseases such as leprosy, cancer, heart ailments and the like
6. Loss of children who would have come of age
7. Loss of thinking faculty etc

SOUTHWEST WEST STREET FOCUS

If a street strikes on the WSW of the house it is called WSW street thrust, see figure



Just as SSW street thrust shows its evil influence on female folks and finances of the home in a similar manner WSW street thrust shows its evil influence on men folk and finances. Its influence is felt on the head of the home and elder children of the family.

Even a king living in such a home would have to face ruination at an early stage. The ill effects of WSW street thrust are

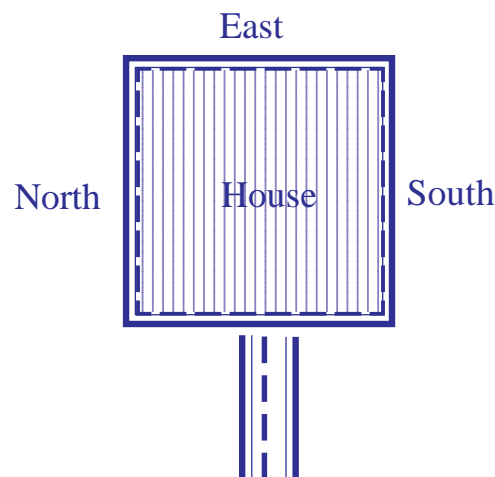
1. The head of the family even when otherwise healthy and active, suddenly falling a victim of paralysis or other incurable deseases.
2. Playing a second fiddle to the lady of the house, becoming incompetent, succumbing to all ills that be fall, loosing one's thinking faculties, and hence depending on others, and non bothering about the problems and losses face by such people, loosing one's own identity, insecurity feeling, confused life, worrying even for very small things in life, unable to face daily chores of life and the like
3. Financial losses, loosing every thing.

4. Bad habits, lust for spicy foods, excessive desire for non Vegetarian foods, getting addicted to intoxicants
5. Doing such acts as to getting caught by the ladies of the house, falling ill thus becoming incapable and dependent on the ladies of the house for every thing, facing sharp criticism.
6. Disputes, fights etc.
7. Always getting involved in minor or irrelevant disputes, doing some or other wrong things and thus being accused and losing status
8. Some times desiring to stay alone and lead a sacred life, becoming timid to show one's face in society, unexplainable helplessness, feeling depressed as if he has not achieved any thing in the life, trying to avoid main roads and thus avoid public gaze.
9. Even when people residing in such houses, desire to live them, circumstances so conspire as to prevent any move in this regard. It may even prevent them consulting a competent vastu scholar.

It is in deed hell with no outlet.

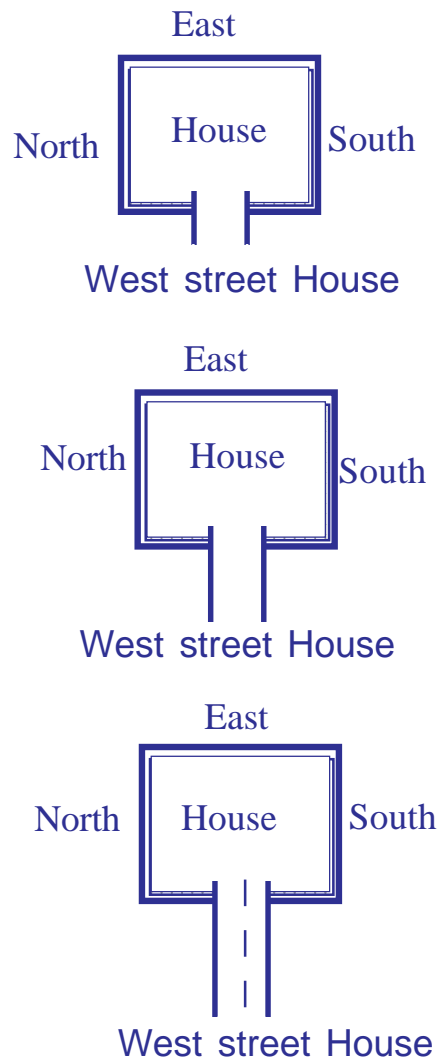
WEST STREET FOCUS

When a street strikes on western side of a house it could be called western street thrust see figure we should discuss in detail.

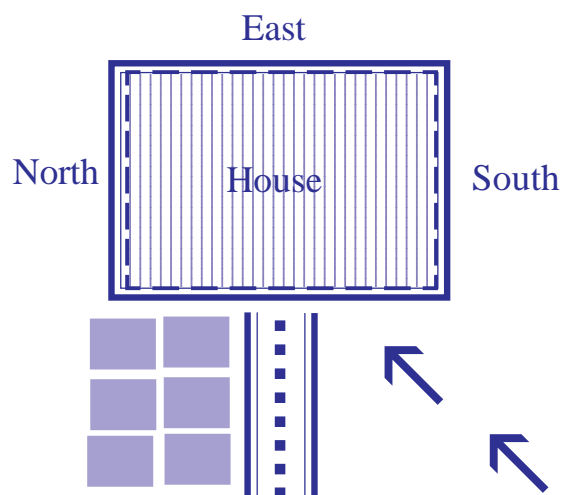


See figure where the western entrance is forming a sort of extended entrance. See also figures A and B where the entrance is transforming itself into western street thrust

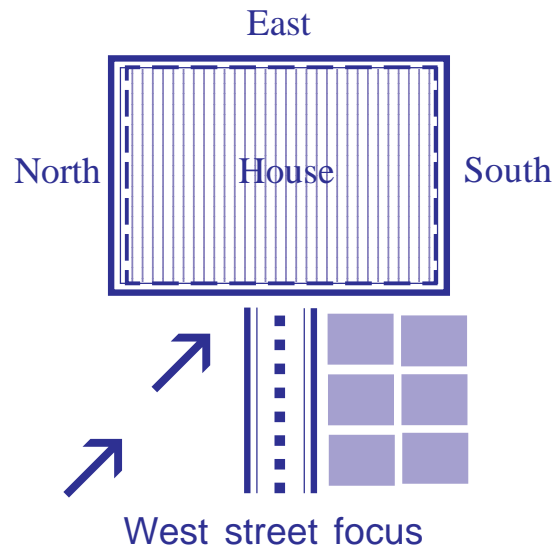
We are preparing house corrections in 3d style, visit this link to know some information on our work. <http://www.subhavaastu.com/vastu-modifications.html> ..



The western street thrust is indeed benevolent, now we will see some of the possible ill effects of western street thrust,



In figure there are construction to the north of the street rendering SW area vacant, there is thus an unseen SW street thrust.



In figure there are construction to the south of the street rendering northwest area vacant and southwest area pack causing unseen WNW street thrust , this is beneficial

I would like to emphasize as was done earlier that it is best that one consult a competent vastu scholar in situations of west street thrust occurring. He will be in a position to observe the consequences of the same and render remedial measures where necessary

Beneficial effects

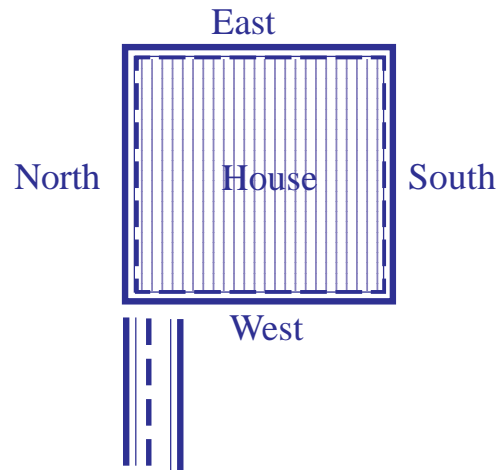
1. Being labeled as elder in the society
2. Name and fame in the neighbourhood and in the society
3. Political influences
4. Employees being good at work (employees of residents)
5. Success in litigation
6. Pleasant life
7. Getting inclined towards God , becoming devoted, doing fair things in the name of God etc.
8. The male members earning by fair honest and hard work thus becoming examples for others to follow.

All this results are only when the Western street thrust is genuinely western. However if this street thrust starts from southwest side and strikes house on the west it is no more benevolent and even may be bad.

One should note that benevolent effects of street thrust are slow in their effect. On the other hand the malevolent effects are quick in their action. It is for this reason that one must consult rather early a competent vastu scholar for advise in this regard.

NORTHWEST WEST STREET FOCUS

When a street strikes house / plot it is WNW street thrust.



This street thrust belongs to the benevolent category, in such a case having the house vastu compliant would greatly benefit

A unique feature of this street thrust is being successful in all situations, problems, litigations etc. This houses are very special to personal in the following fields – politics, legal, real estate business, law enforcing police officials, religious leaders and the like. As often said it is essential that the house be vastu compliant. For even though the benevolent street thrust does bestow its influence, when the house is not vastu compliant that also gives out its own malignant component too, with the result the residents would feel good at times and miserable at other times. Further there is every possibility of a situation where even when success is a natural phenomena is a given situation it may elude.

When there is WNW street thrust, it is best to have open space towards east , see figure.

Such open space will be greatly beneficial to people in political field and the like. If there be open space in the north to (in addition to that in east) it would result in unimaginable good things happening.

Residents of such houses will succeed in their respective ventures or activities. WNW street thrust are of two kinds

1. Naturally occurring
2. Street thrust happening consequent to encroachment as in figure

Are you interested in downloading God Wallpapers click this link <http://www.subhavaastu.com/wallpapers-section.html> .. dont forget to sent this link to your friend.

This is a sample book.

Do you want to read complete book
then buy it .. write an email to :
subhavaastu@gmail.com .. we will
send you the payment link.

Cost of this ebook is : \$ 99 USD.

Present offer price is only \$ 49 USD.

visit our website

<http://www.SubhaVaastu.com>

Cell : 00 91 98481 14778.